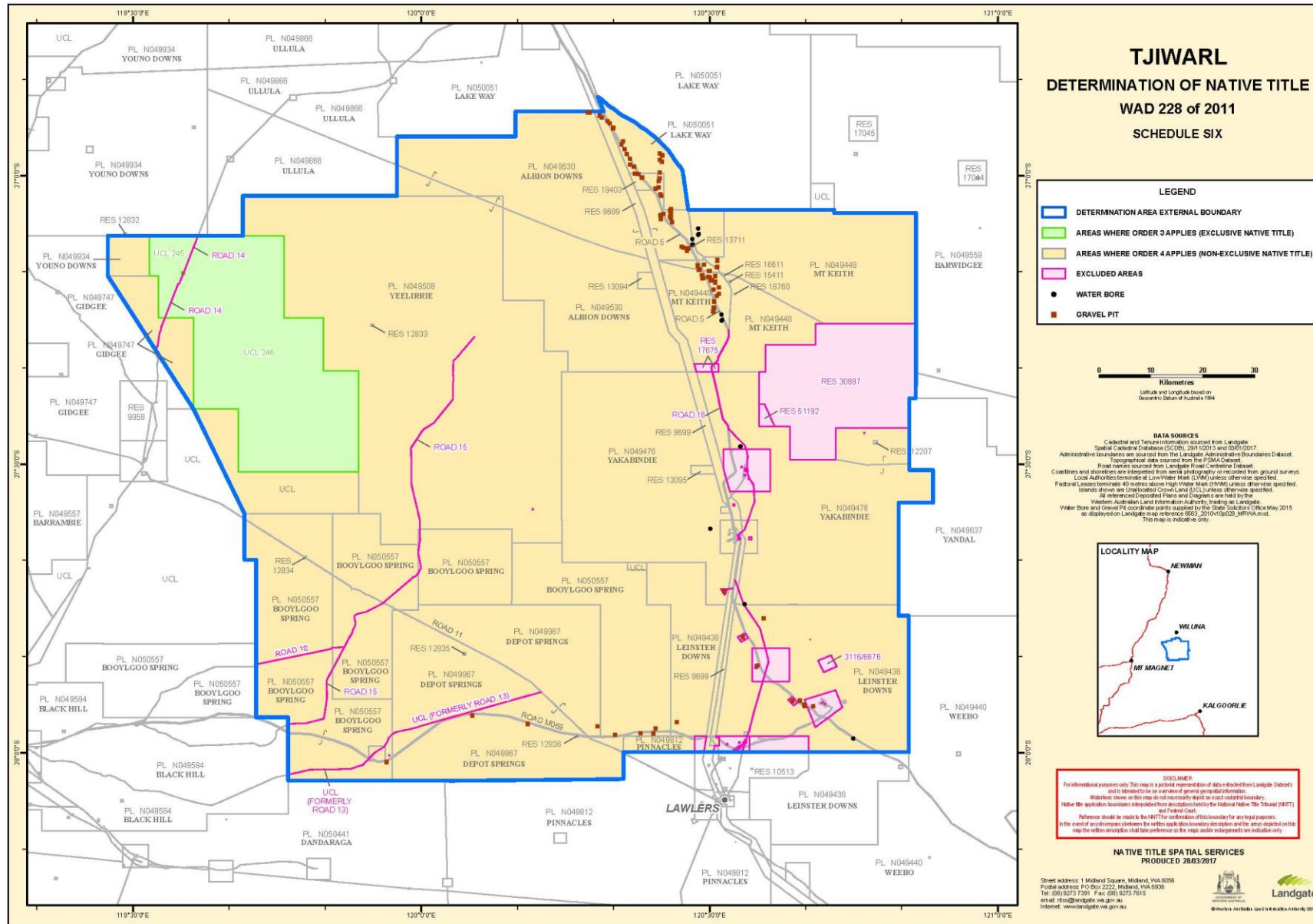
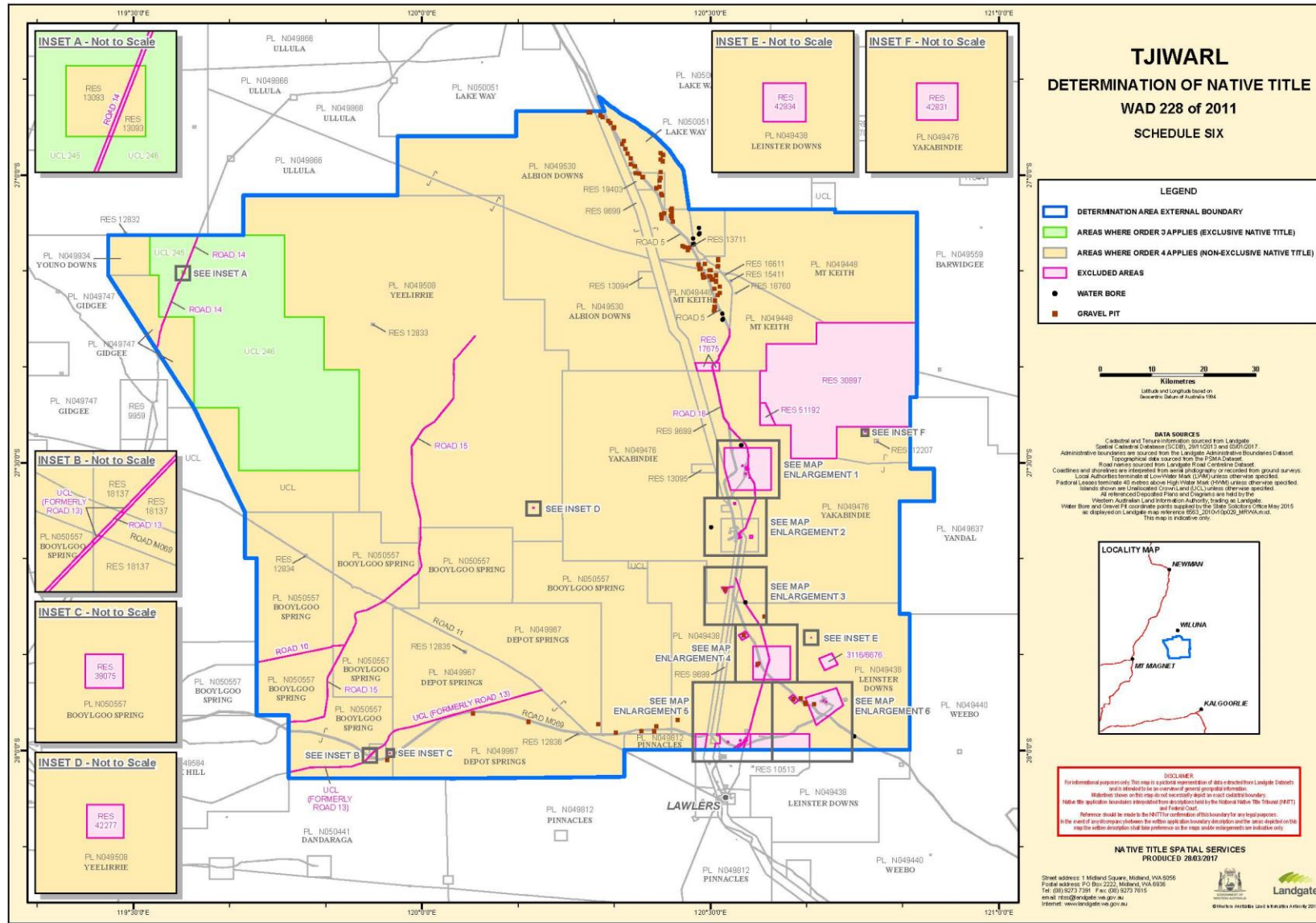
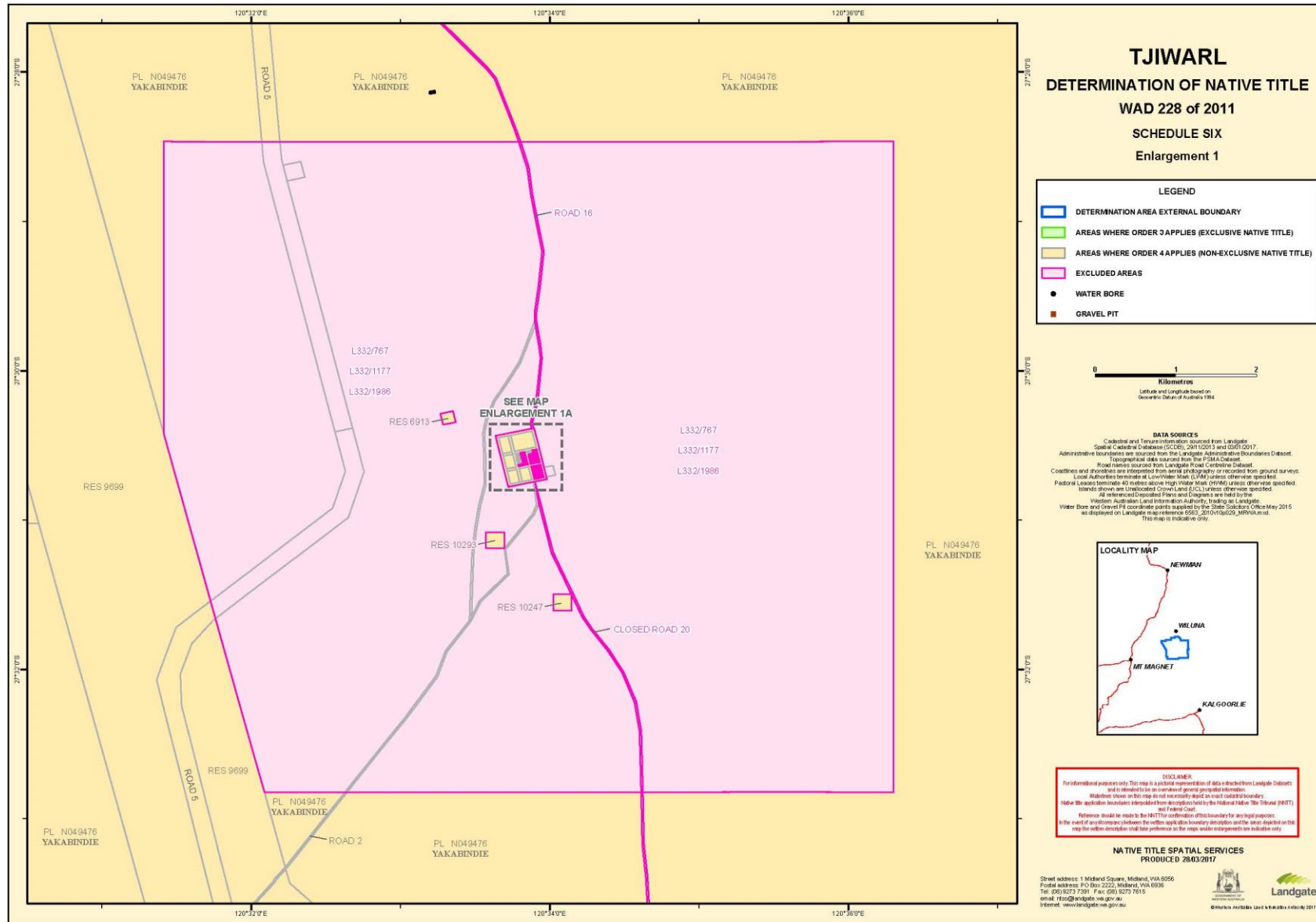


SCHEDULE 6

MAPS OF THE DETERMINATION AREA



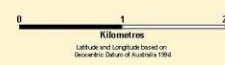




TJIWARL
DETERMINATION OF NATIVE TITLE
WAD 228 of 2011
SCHEDULE SIX
Enlargement 1

LEGEND

- DETERMINATION AREA EXTERNAL BOUNDARY
- AREAS WHERE ORDER 3 APPLIES (EXCLUSIVE NATIVE TITLE)
- AREAS WHERE ORDER 4 APPLIES (NON-EXCLUSIVE NATIVE TITLE)
- EXCLUDED AREAS
- WATER BORE
- GRAVEL PIT



DATA SOURCES
 Cadastral and Tenure information sourced from Landgate Spatial Cadastre Database (SCDB), 2011/03/15 and (DDE) 2017. Administrative boundaries are sourced from the Landgate Administrative Boundaries Dataset. Topographical data sourced from the 1:50,000 dataset. Road names sourced from Landgate Road Centreline Dataset. Coordinates and boundaries are interpreted from aerial photography or records from ground surveys. Local Authorities terminate at Low Water Mark (LWM) unless otherwise specified. Pastoral Leases terminate 40 metres above High Water Mark (HWM) unless otherwise specified. Islands shown are Unincorporated Crown Land (UCL) unless otherwise specified. All referenced Unincorporated Plans and Diagrams are held in the Western Australian Land Information Authority, trading as Landgate. Water Bore and Gravel Pit coordinate points supplied by the State Substruc. Office May 2015 as displayed on Landgate map reference 8553_2010/10/029_NTR/WA.mxd. This map is indicative only.



DISCLAIMER
 For informational purposes only. This map is a product representation of data as described from Landgate Datasets and is intended to be an overview of general geographic information. Whether shown on this map does not necessarily depend on exact cadastral boundary. Native Title application boundaries interpreted from description held by the National Native Title Tribunal (NNTT) and Federal Court. Reference should be made to the NNTT for confirmation of this boundary for any legal purposes. In the event of any discrepancy between the native title application boundary description on this map and that on the map the native title application shall take preference to the map and/or interpretations are suitable only.

NATIVE TITLE SPATIAL SERVICES
 PRODUCED 28/03/2017

Street address: 1 Midland Square, Midland, WA 8056
 Postal address: P.O. Box 2222, Midland, WA 8056
 Tel: (08) 9273 7391 Fax: (08) 9273 7615
 email: nts@landgate.wa.gov.au
 Internet: www.landgate.wa.gov.au

Landgate
 © 2017 by the State of Western Australia

